



# POLSKIE RATOWNICTWO OKRĘTOWE

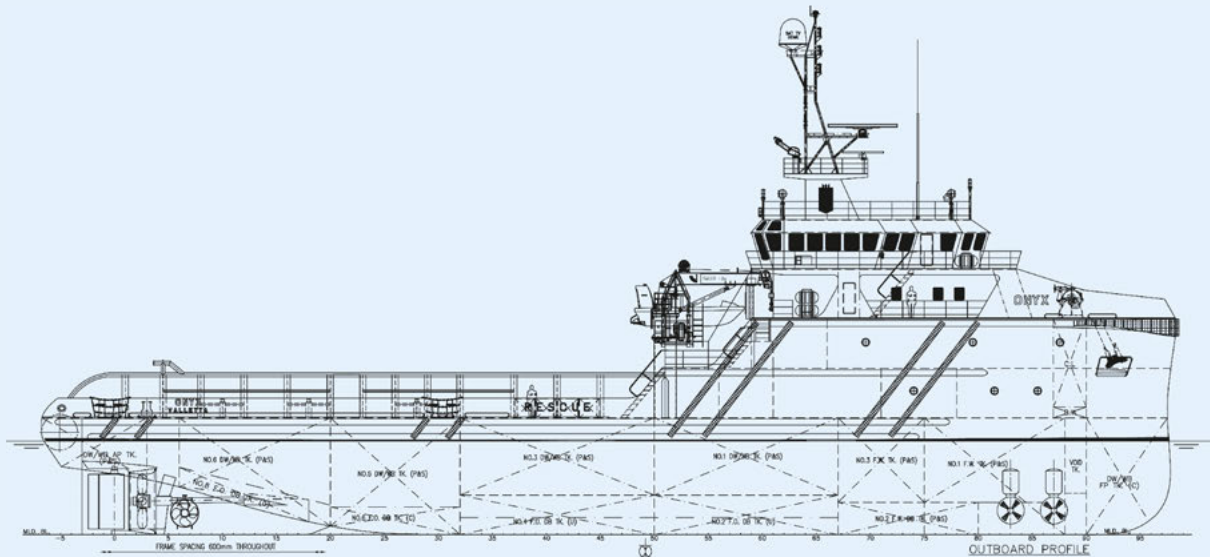
Est. 1951



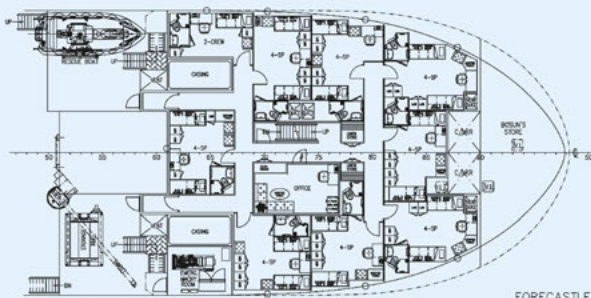
## ONYX

**TUG SUPPLY FIRE FIGHTING SHIP 1, OIL RECOVERY, SPECIAL SERVICE, ANCHOR HANDLING, DP 2**

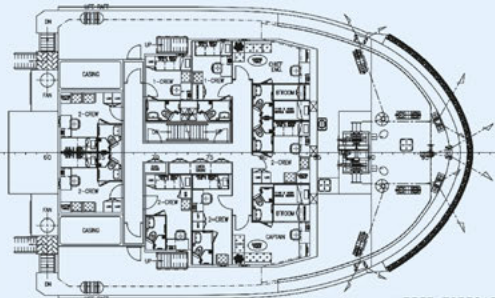
MAIN DESCRIPTION		FIFI AND ANTI POLLUTION	
Port of Registry:	Valletta	FIFI	class 1
Call sign	9HA3841	Capacity	2 x 1400 m <sup>3</sup> / hr
Flag:	Malta	Monitors	2 x 1200 m <sup>3</sup> / hr
IMO number	9752400	Pumps	water/foam
Delivered	2015	Oil dispersant	Throw nozzle type, FFS
Classification	PRS		
Class	Tug, Supply, Anchor Handling, Special Service, Fire Fighting 1, DP 2		
Operating Area	Unrestricted trade	TANKS CAPACITIES & PUMPS	
Bollard pull	65 tons	Fuel Oil capacity	596 m <sup>3</sup>
Cruising speed	10 knots	Fresh Water capacity	450 m <sup>3</sup>
Maximum Speed	13 knots	Drill Water capacity	743 m <sup>3</sup>
		Liquid mud / fuel oil capacity / ORO	350 m <sup>3</sup> / 280 m <sup>3</sup>
		Cement tank capacity	170 m <sup>3</sup>
		Discharge rate fuel	150 m <sup>3</sup> /hr
		Discharge rate fresh water	100 m <sup>3</sup> /hr
		Discharge rate drill water	100 m <sup>3</sup> /hr
		Discharge rate Liquid Mud	2 x 75 m <sup>3</sup> / hr
		Bulk cement	FAD 20 m <sup>3</sup> / min
MAIN DIMENSIONS		DECK & TOWING EQUIPMENT	
LOA	63,00 m	Towing/AH winch	Double drums, water-fall arrangement, Mc Gregor
Beam	15,80 m	Drums Capacity	2 x 1000 m / 58 mm
Max Draught	5,10 m	Line pull	150 T
GRT	1992 tons	Brake holding	250 T
NRT	597 tons	Storage reel	1000 m / 58 mm
Deck strength	7.0 mt / m <sup>2</sup>	Capstan	2 x 5 T
DWT	170 tons	Tugger Winch	2 x 10 T
Deck cargo	550 tons	Stern roller	5 x 1,6 m diam, SWL 200 T
Clear deck area	430 m <sup>2</sup> (33 x 13 m)	Shark Jaws	SWL 300 T, Mc Gregor
Total accommodation	48	Tow pins	2 with turntable top flaps
		Deck crane	Telescopic boom, SWL 5 T x 12 Mtrs
MACHINERY			
Main Engines	2 X CAT 3516 C/1600 RPM		
BHP	Caterpillar total 5150		
Propellers	two CPP in Kort Nozzles		
Bow thrusters	2x 515 kW electric driven, CPP 80 kN		
Stern Thruster	1 x 515 kW electric driven, CPP 80 kN		
DP System	Kongsberg K-POS DP-2		



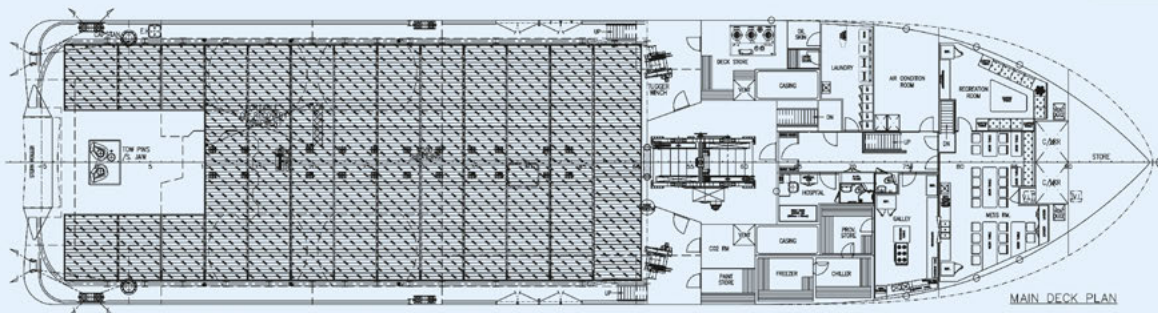
OUTBOARD PROFILE



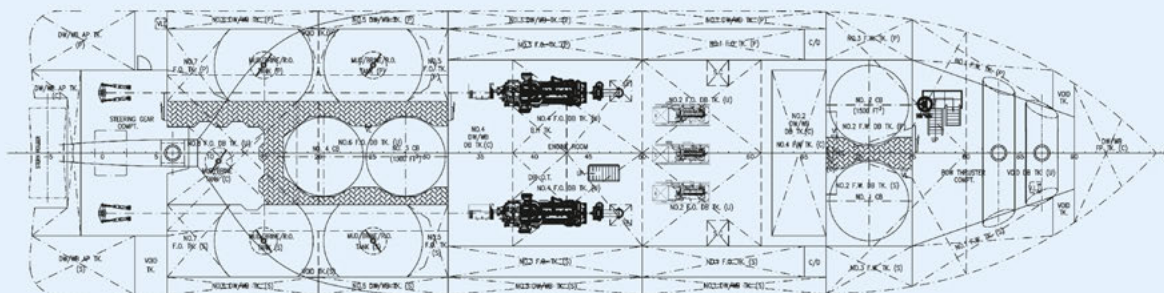
FORECASTLE DECK



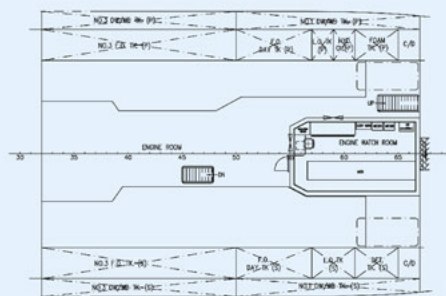
UPPER FORECASTLE DECK



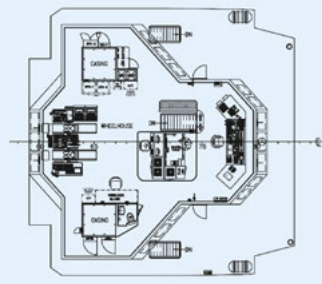
MAIN DECK PLAN



BELOW DECK PLAN



TWEEN DECK PLAN



BRIDGE DECK PLAN

Miodowa 26  
81-558 Gdynia  
VAT No PL5860104397

Secretary +48 58 661-18-15  
Chartering +48 58 621-75-22  
Telefax +48 58 620-19-78

Web page [www.progdynia.pl](http://www.progdynia.pl)  
E-mail [tomasz.borowski@progdynia.pl](mailto:tomasz.borowski@progdynia.pl)  
Mobile +48 601-63-00-61