



VESSEL SHEET



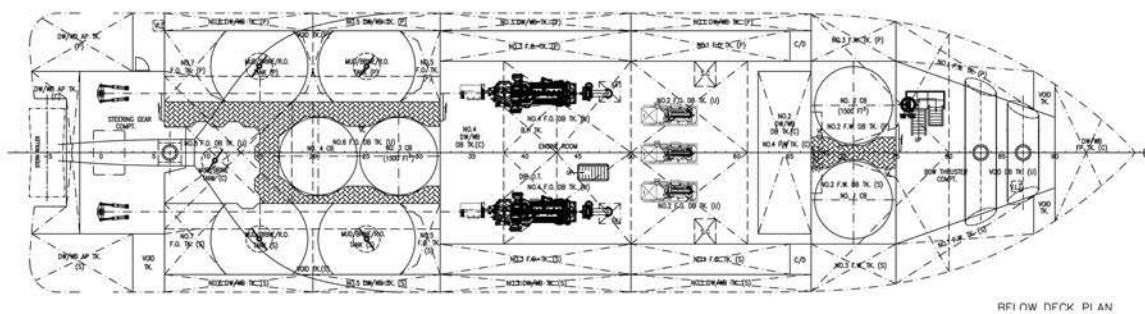
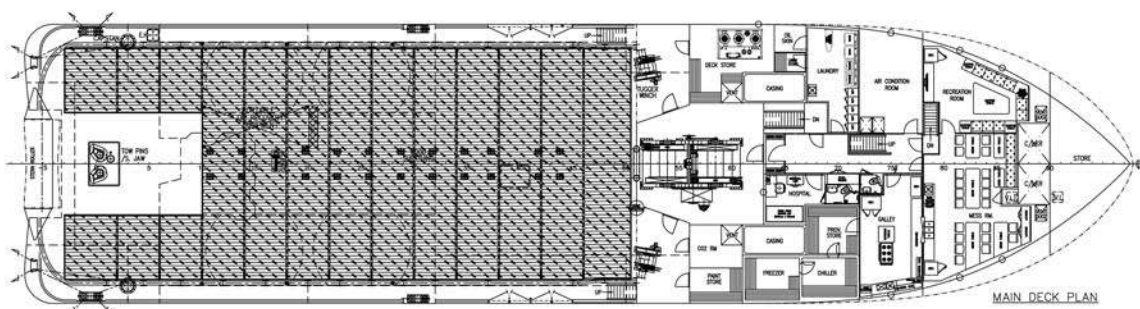
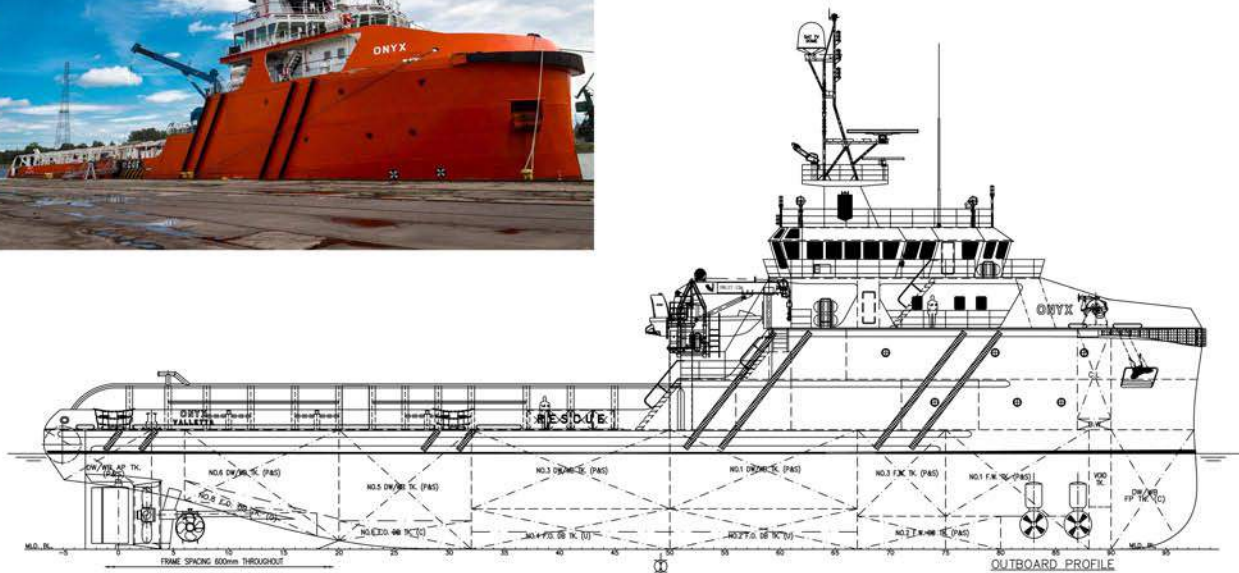
A H T S O N Y X

MAIN DESCRIPTION		DECK & TOWING EQUIPMENT	
CLASS	TUG, SUPPLY, ANCHOR, HANDLING, SPECIAL SERVICE, FIRE FIGHTING, DP2	TOWING/AH WINCH	DUBLE DRUMS, WATER-FALL ARRANGEMENT, Mc GREGOR
PORT OF REGISTRY	VALLETTA	DRUMS CAPACITY	2 x 1000 m / 58 mm
CALL SIGN	9HA3841	LINE PULL	150 TONS
FLAG	MALTA	BRAKE HOLDING	250 TONS
IMO NUMBER	9752400	STORAGE REEL	1000 m / 58 mm
DELIVERED	2015	CAPSTAN	2 x 5 TONS
CLASSIFICATION	PRS	TUGGER WINCH	2 x 10 TONS
OPERATING AREA	UNRESTRICTED TRADE	STERN ROLLER	5 x 1,6 m diam, SWL 200 T
BOLLARD PULL	65 TONS	SHARK JAWS	SWL 300 T, Mc GREGOR
CRUISING SPEED	10 KNOTS	TOW PINS	2 WITH TURNTABLE
MAXIMUM SPEED	13 KNOTS	DECK CRANE	TOP FLAPS
DP SYSTEM	KONGSBERG K-POS DP-2		TELESCOPIC BOOM, SWL 5 T x 12 Mtrs
TANKS CAPACITIES & PUMPS		MAIN DIMENSIONS	
FUEL OIL CAPACITY	596 m ³	LOA	63,00 m
FRESH WATER CAPACITY	450 m ³	BEAM	15,89 m
DRILL WATER CAPACITY	743 m ³	MAX DRAUGHT	5,10 m
MUD/BRINE/RECOVERY OIL	350 m ³ / 280 m ³	GRT	1992 TONS
CEMENT TANK CAPACITY	170 m ³	NRT	597 TONS
DISCHARGE RATE FUEL	150 m ³ / hr	DWT	1708 TONS
DISCHARGE RATE FRESH WATER	100 m ³ / hr	DECK STRENGTH	7,0 mt / m ²
DISCHARGE RATE DRILL WATER	100 m ³ / hr	DECK CARGO	550 TONS
DISCHARGE RATE LIQUID MUD	2 x 75 m ³ / hr	CLEAR DECK AREA	430 m ² (33 x 13 m)
BULK CEMENT	FAD 20 m ³ / min	TOTAL ACCOMMODATION	48
FIFI AND ANTI POLLUTION		MACHINERY	
FIFI	CLASS 1	MAIN ENGINES	2 X CAT 3516 C/1600 RPM
CAPACITY	2 x 1400 m ³ / hr	BHP	CATERPILLAR
MONITORS	2 x 1200 m ³ / hr	PROPELLERS	TOTAL 5150
PUMPS	WATER / FOAM	BOW THRUSTERS	TWO CPP IN KORT NOZZLES
OIL DISPERSANT	THROW NOZZLE TYPE, FFS	STERN THRUSTER	2x 515 kW ELECTRIC DRIVEN
			CPP 80 kN
			1x 515 kW ELECTRIC DRIVEN

VESSEL SHEET



AHTS ONYX



vessels particulars believed to be correct but not guaranteed

**Polskie Ratownictwo Okrętowe
Sp. z o.o.**

phone: +48 58 624 81 22
e-mail: chartering@progdynia.pl
web page: www.progdynia.pl