



1951



AHTS AMBER II

MAIN DESCRIPTION

CLASS	TUG/SUPPLY, FIRE FIGHTING 1 SHIP
PORT OF REGISTRY	VALLETTA
CALL SIGN	9HLD9
FLAG	MALTA
IMO NUMBER	9425423
DELIVERED	2008
CLASSIFICATION	PRS
OPERATING AREA	UNRESTRICTED TRADE
BOLLARD PULL	65 T
CRUISING SPEED	10 KNOTS
MAXIMUM SPEED	13 KNOTS

DECK & TOWING EQUIPMENT

TOWING/AH WINCH	DOUBLE DRUM, ELECTRO HYDRAULIC, MENTRADE
DRUMS CAPACITY	2 x 1000 m/ 54mm
LINE PULL	150 T
BRAKE HOLDING	200 T
STORAGE REEL	1000 m/ 54mm
CAPSTAN	2 x 5 T
TUGGER WINCH	2 x 10 T
STERN ROLLER	5,0 m x 1,6 m SWL 200 T
KARMFORK	SWL 300 mT
TOWING PINS	2 WITH TURNABLE TOP FLAP
DECK CRANE	6 T / 1,57 T AT 12,3 m
CHAIN STOPER	1 x KARMFORK KARMOY

TANKS CAPACITIES & PUMPS

FUEL OIL CAPACITY	592 m ³
FRESH WATER CAPACITY	215 m ³
DISCHARGE RATE FUEL	60 m ³ /h
DISCHARGE RATE FRESH WATER	60 m ³ /h

MAIN DIMENSIONS

LOA	48,00 m
BEAM	13,20 m
MAX DRAUGHT	4,50 m
GRT	975
NRT	292
DWT	767
DECK STRENGTH	7 T/ m ²
DECK CARGO	200 T
CLEAR DECK AREA	220 m ³ ABT. 21.7 x 10,2 m
TOTAL ACCOMMODATION	26

MACHINERY

MAIN ENGINES	2 X CATERPILLAR
BHP	TOTAL 5150
PROPELLERS	TWO CPP IN KORT NOZZLES
BOW THRUSTERS	5 TONS / 425 HP

FIFI AND ANTI POLLUTION

FIFI	CLASS 1
CAPACITY	1200 m ³ / h
MONITORS	2 pcs
OIL DISPERSANT	20,34 m ³



1951



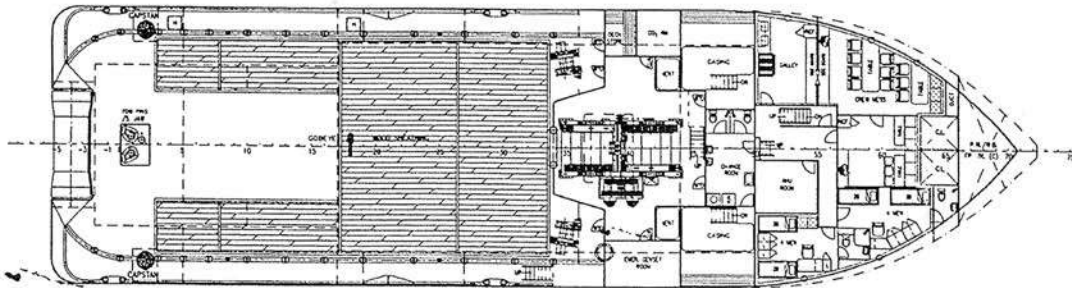
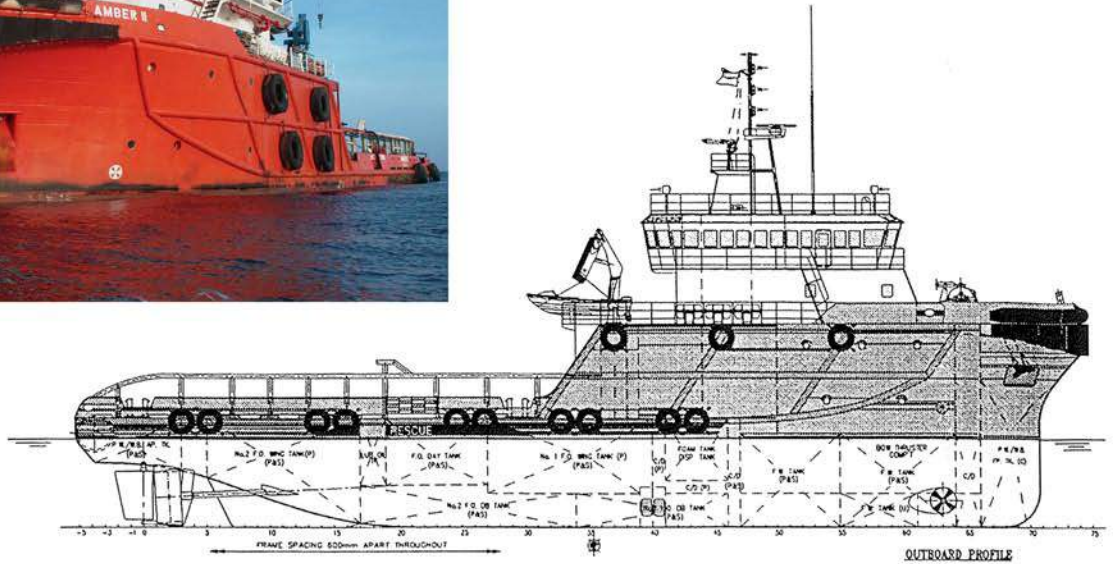
AC 814
QMS



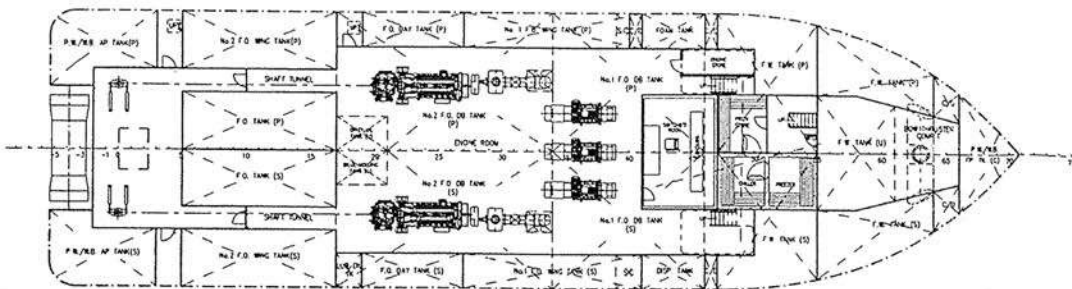
ISO 9001



AHTS AMBER II



MAIN DECK PLAN



BELOW MAIN DECK PLAN

vessels particulars believed to be correct but not guaranteed

**Polskie Ratownictwo Okrętowe
Sp. z o.o.**

phone: +48 58 624 81 22
e-mail: chartering@progdynia.pl
web page: www.progdynia.pl