



1951



## self propelled revolving arm floating crane 330 tons lifting capacity **MAJA**

MAIN DESCRIPTION		DECK CARGO CAPACITY	
<b>CLASS</b>	<b>*KM FLOATING CRANE III [1] L3</b>	DECK CARGO CAPACITY	800 T
<b>TYPE</b>	<b>SELF PROPELLED, REVOLVED FLOATING CRANE</b>	CARGO DECK AREA	19,2 x 19,2 m
PORT OF REGISTRY	GDYNIA	CARGO DECK STRENGTH	6 - 10 T / m <sup>2</sup>
CALL SIGN	SQKR	<b>DECK EQUIPMENT</b>	
FLAG	POLISH	MOORING WINCHES	4
IMO NUMBER	8829127	ANCHOR WINCHES	4
DELIVERED	1980	<b>WORK CONDITIONS</b>	
CLASSIFICATION	PRS	WORK OF CRANE	FORCE OF WIND UP TO 5 <sup>o</sup> B HIGHT OF WAVE UP TO 2 m
<b>MAIN DIMENSIONS</b>		SAILING	FORCE OF WIND UP TO 5 <sup>o</sup> B
LOA	55,49 m	MAX. SPEED	6 KNOTS
BREADTH	25,02 m	<b>TANKS CAPACITY</b>	
DRAUGHT	2,85 m	FUEL OIL	94 m <sup>3</sup>
DRAUGHT AT WORK	UP TO 4,5 m	POTABLE WATER	25 m <sup>3</sup>
GRT	1964	BALLAST WATER	200 m <sup>3</sup>
NRT	589	<b>ENGINES AND PROPULLSION</b>	
<b>CRANE</b>		MAIN ENGINES	2 x SULZER 6AL25/30
MAIN HOOK	330 T	BHP	2170
SMALL HOOK	100 T	ALTERNATORS	2 x 1250 kVA
MAIN HOOK SPEED	0,15 - 3,5 m/min	PROPELLERS	3 CYCLOIDAL ON AFT OF PONTOON
SMALL HOOK SPEED	0,15 - 5,5 m/min	<b>OTHER</b>	
360 <sup>o</sup> REVOLVING TIME	4,5 min	SUBMERSIBLE SALVAGE PUMPS, ACCOMODATION UP TO 13 PERSONS INCLUDING CREW, CAN BE INCREASED	

### Thanks to her construction she is able to:

- lift cargoes of weight to 330 tons (including lifting equipment: slings shackles, beams etc.),
- rotate the cargo horizontally,
- using two hooks - 330 tons and 100 tons - a cargoes can be rotated also vertically,
- transport of the cargo inside the closed waters and ports on the one hook or two hooks,
- unlike the sheerleg, transport a cargo up to 800 tons on the deck through the open sea



1951

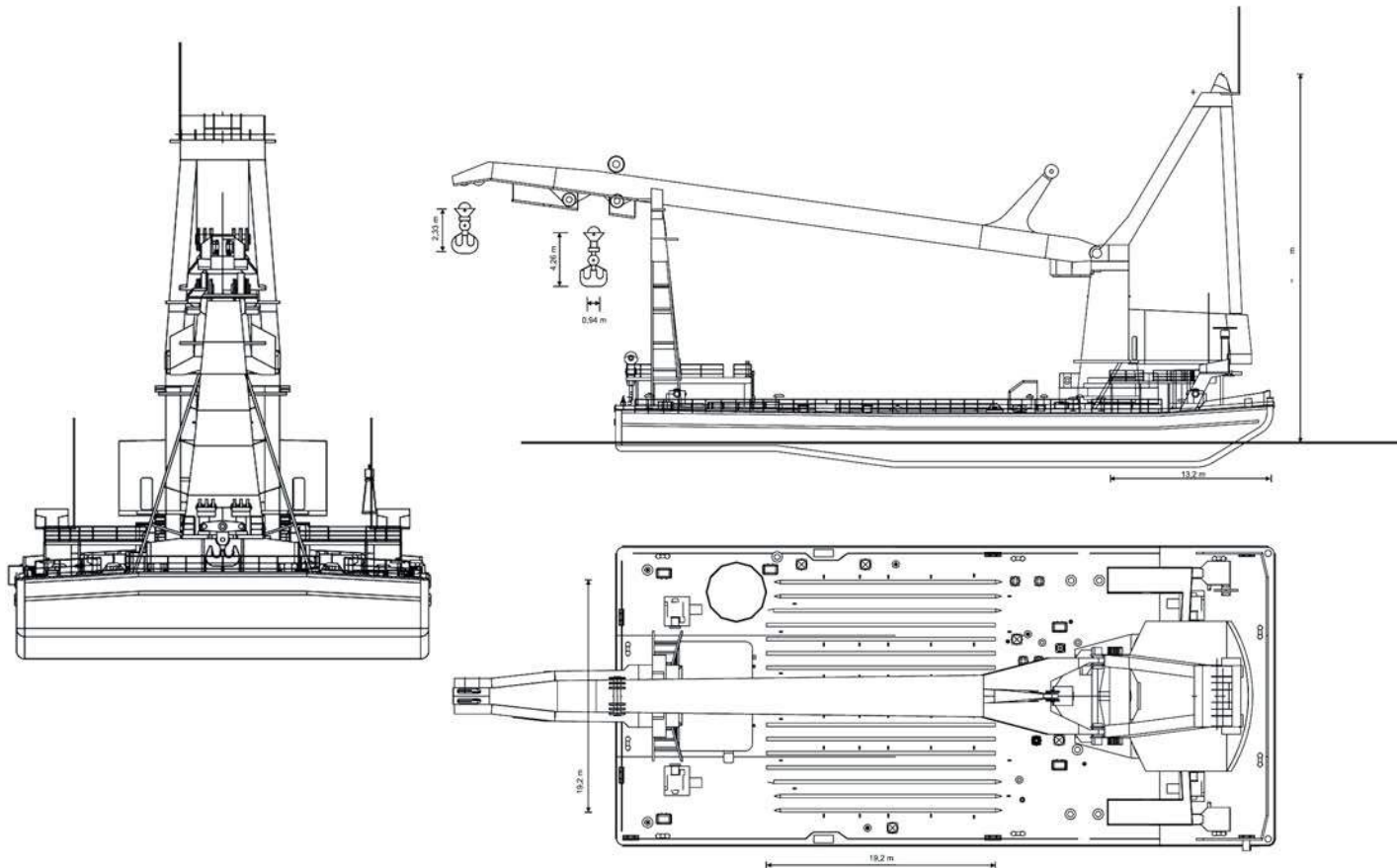
# FLOATING CRANE



AC 814  
QMS



ISO 9001



## MAIN HOOK 330 T - CRANE RADIUS FROM AXIS OF ROTATION - SIDE PROGRAM

	330 T		300 T				275 T				220 T				165 T				132 T							
HEIGHT ABOVE WATER LEVEL (m)	46.0	46.0	45.3	44.3	43.7	43.0	42.3	41.5	40.8	40.4	39.4	38.6	38.0	37.4	36.7	36.0	35.1	34.2	33.3	32.0	30.2	29.6	28.7	27.4	25.4	24.0
RADIUS (m)	15.0	15.0	16.0	17.0	18.0	18.8	20.0	21.0	22.0	23.0	24.0	25.0	26.0	27.4	28.0	29.0	30.0	31.0	32.0	33.0	34.2	35.0	36.0	37.0	38.0	38.7

radius from pontoon side = radius -12,8m

## MAIN HOOK 330 T - CRANE RADIUS FROM AXIS OF ROTATION - BOW PROGRAM (0-17 DEGREES FROM SYMMETRY LINE)

	330 T										275 T			220 T			165 T							
HEIGHT ABOVE WATER LEVEL (m)	46.0	45.3	45.0	44.5	44.0	44.0	43.5	43.0	42.5	42.0	41.0	40.5	40.5	40.0	39.0	38.0	37.0	36.0	35.0	34.0	32.5	31.0	29.5	29.0
RADIUS (m)	15.0	16.0	17.0	18.0	19.0	20.0	21.0	22.0	23.0	24.0	25.0	26.7	28.0	29.0	29.7	31.0	32.0	32.7	34.0	35.0	36.0	37.0	38.0	38.7

radius from bow of pontoon = radius -13,2m

## HOOK 100 T - CRANE RADIUS FROM AXIS OF ROTATION

	100 T																								
HEIGHT ABOVE WATER LEVEL (m)	60	59	58	57	56	55	54	53	52	51	50	49	48	47	46	45	44	43	42	41	40	39	38	37	36
RADIUS (m)	18.0	19.2	20.5	21.7	22.6	24.0	25.2	26.6	27.8	29.0	30.2	31.4	32.6	34.0	35.2	36.4	37.6	39.0	40.2	41.4	42.6	44.0	45.0	46.3	47.7

radius from pontoon side = radius -12,8m

tables do not contain pontoon list

vessels particulars believed to be correct but not guaranteed

**Polskie Ratownictwo Okrętowe**  
Sp. z o.o.

phone: +48 58 624 81 22  
e-mail: chartering@progdynia.pl  
web page: www.progdynia.pl