



1951



# AHTS OPAL

MAIN DESCRIPTION		DECK & TOWING EQUIPMENT	
<b>CLASS</b>	<b>TUG/SUPPLY VESSEL FIRE FIGHTING 1, SPECIAL PURPOSE SHIP</b>	<b>TOWING/AH WINCH</b>	<b>DUBLE DRUM, ELECTRO HYDRAULIC, MENTRADE</b>
PORT OF REGISTRY	VALLETTA	DRUMS CAPACITY	2 x 1000 m / 56 mm
CALL SIGN	9HA2265	LINE PULL	150 TONS
FLAG	MALTA	BRAKE HOLDING	200 TONS
IMO NUMBER	9489479	STORAGE REEL	1000 m / 56 mm
DELIVERED	2009	CAPSTAN	2 x 5 TONS
CLASSIFICATION	PRS	TUGGER WINCH	2 x 10 TONS
OPERATING AREA	UNRESTRICTED TRADE	STERN ROLLER	4.50 x 1,6 m 180 mt SWL
BOLLARD PULL	67 TONS	KAMFORK	SWL 300 mt
CRUISING SPEED	10 KNOTS	TOWING PINS	2 WITH TURNTABLE TOP FLAPS
MAXIMUM SPEED	13 KNOTS	DECK CRANE	10 600 kg AT 5.45 m
SPECIAL PERSONEL	30		3 260 kg AT 15.95 m
TANKS CAPACITIES & PUMPS		MAIN DIMENSIONS	
FUEL OIL CAPACITY	540 m <sup>3</sup>	LOA	59,25 m
FRESH WATER CAPACITY	370 m <sup>3</sup>	BEAM	14,95 m
DRILL WATER CAPACITY	400 m <sup>3</sup>	MAX DRAUGHT	4,95 m
LIQUID MUD / FUEL OIL CAPACITY	420 m <sup>3</sup>	GRT	1678 TONS
CEMENT TANK CAPACITY	187 m <sup>3</sup>	NRT	503 TONS
DISCHARGE RATE FUEL	150 m <sup>3</sup> / hr	DWT	1337 TONS
DISCHARGE RATE FRESH WATER	125 m <sup>3</sup> / hr	DECK STRENGTH	7,5 mt / m <sup>2</sup>
DISCHARGE RATE DRILL WATER	100 m <sup>3</sup> / hr	DECK CARGO	500 TONS
DISCHARGE RATE LIQUID MUD	2 x 70 m <sup>3</sup> / hr	CLEAR DECK AREA	350 m <sup>2</sup>
BULK CEMENT	2 x 13 m <sup>3</sup> / min	TOTAL ACCOMODATION	42
MACHINERY		FIFI AND ANTI POLLUTION	
MAIN ENGINES	2 X 1920 kW/1600 RPM CATERPILLAR	FIFI	CLASS 1
BHP	TOTAL 5150	CAPACITY	2 x 1550 m <sup>3</sup> / hr
PROPELLERS	TWO CPP IN KORT NOZZLES	MONITORS	2 x 1200 m <sup>3</sup> / hr ONE WITH 300 m <sup>3</sup> / hr FOAM
BOW THRUSTERS	371 kW TUNNEL CPP 59 kN	OIL DISPERSANT	2 SPRAY BOOMS 6 m
JOYSTICK	BRIDGE MATE		



1951



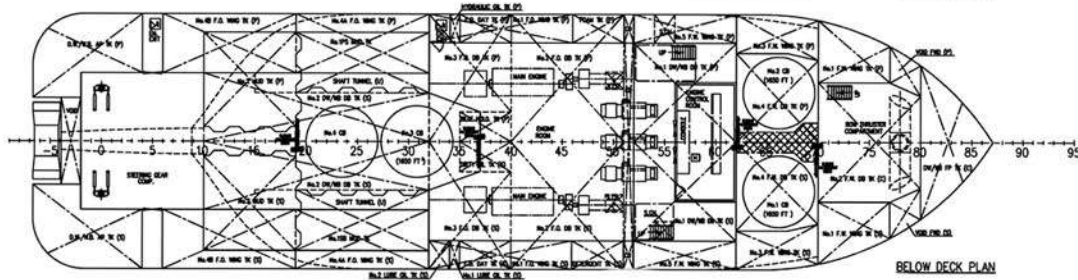
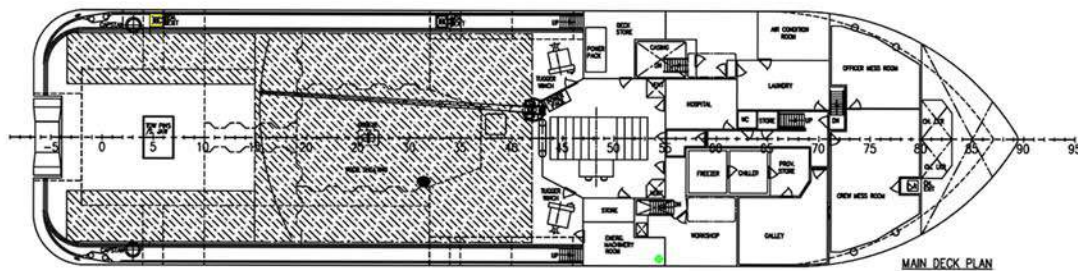
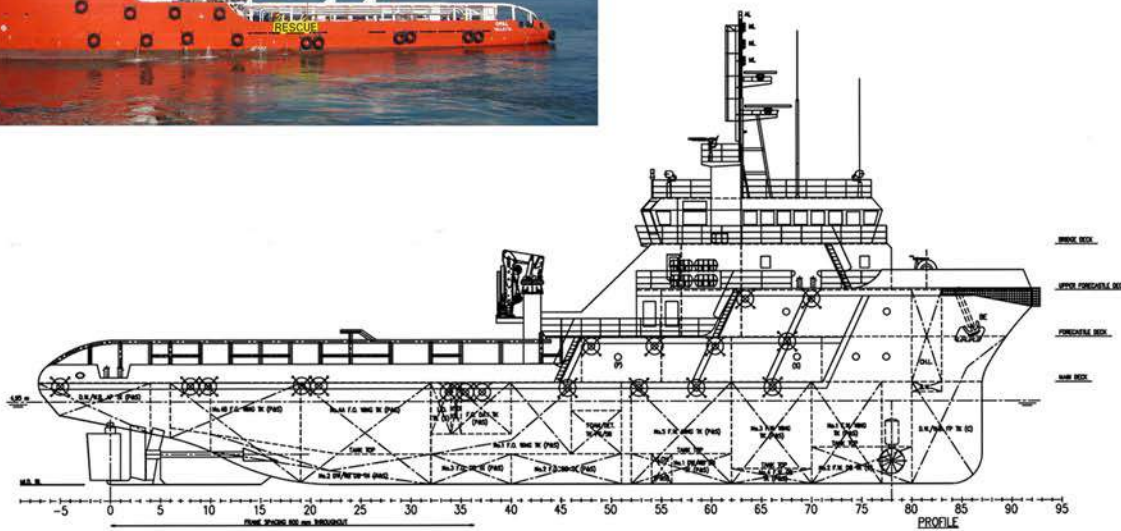
AC 814  
QMS



ISO 9001



# AHTS OPAL



vessels particulars believed to be correct but not guaranteed

**Polskie Ratownictwo Okrętowe  
Sp. z o.o.**

phone: +48 58 624 81 22  
e-mail: [chartering@progdynia.pl](mailto:chartering@progdynia.pl)  
web page: [www.progdynia.pl](http://www.progdynia.pl)